

SHERIDAN PATHWAYS MASTER PLAN

An Update to the 2007 Sheridan Pathways Master Plan



Prepared by:



MC2 Engineering and Construction, PC
902 North Main Street
Sheridan, WY 82801
307.673.7350

Prepared for:



June 2019

The City of Sheridan has contracted with MC2 Engineering and Construction, PC of Sheridan to update the Sheridan Pathways Master Plan. The original plan, *Sheridan Pathways Project*, was prepared in 1997, and was updated in 2007. The previous master plan update divided the pathways into four different categories based on priority. These categories are:

1. Tier 1 Multi-use Pathway Projects, which are the highest priority regarding the need for implementation.
2. Tier 2 Multi-use Pathway Projects, which are a mid-level priority regarding implementation.
3. Tier 3 Multi-use Pathway Projects, which are the lowest priority of pathways to be implemented.
4. Regional Multi-use Pathway Projects, which are pathways outside the city limits. In this update, these pathways will not be addressed.

The 2007 Master Plan update has proved to be a valuable guide for the City of Sheridan in determining the feasibility of designing and constructing new pathways. The update identified eleven Tier 1 Pathway Projects, eight Tier 2 Pathway Projects, and sixteen Tier 3 Projects. Of these identified projects, a total of eight of the Tier 1 Projects have been completed and one of the Tier 2 Projects.

Tables 1-1 through 1-3 list the projects that were detailed in the 2007 update including their approximate footages and estimated construction costs.

A further description of each of the projects are detailed below.

Tier 1 Pathways

P1-1. 5th Street Crossing by Lower Goose Creek Multi-Use Pathway

As part of the 5th Street reconstruction project, an underpass pathway was added allowing safe access for pedestrians to cross when utilizing the pathway system along the levee system.

P1-2. Little Goose Multi-Use Pathway – Washington Park to Whitney Ice Arena

Portions of this pathway has been completed since the master plan update. The connection from Works Street to Heald Street utilizes pathway that was constructed along the levee. The portions that still need to be designed and constructed are from Sheridan Avenue to Works Street and Heald to Washington Park.

P1-3. Extension of Kendrick Park Multi-use Pathway – Trail End Museum to Pioneer Avenue

The pathway from the Trail End Museum to Pioneer Avenue was completed.

P1-4. Extension of Kendrick Park Multi-use Pathway – Kendrick Park to Trail End Museum and Sheridan Junior High School

A pathway has been construction that connects Kendrick Park to the Trail End Museum and the Sheridan Junior High School.

P1-5. Extension of Kendrick Park Multi-use Pathway (Lewis Street Underpass)

The Lewis Street bridge has been reconstructed since the last update to the Pathways Master Plan. As part of that project, an underpass crossing was designed and constructed on Lewis Street.

P1.6. Railroad Multi-use Pathway Alger Street connection to Whitney Commons and Extension to Dow Street

This project has not been designed or constructed.

P1.7. Extension of Hume Draw Multi-use Pathway from its Current Ending Point North and West of Memorial Hospital South to 5th Street

The pathway that ended north and west of the hospital has been completed and currently connects to the sidewalk on 5th Street.

P1-8. Little Goose Multi-Use Pathway – Sheltered Acres Park to Brundage Lane

The pathway proposed in the 2007 update to connect Sheltered Acres Park to Brundage Lane has been designed and constructed.

P1-9. Big Goose Highway Multi-Use Pathway – Southwest Entrance Kendrick Park to Osprey Hill Addition

A connection has been made from Kendrick Park to the Sparrowhawk Subdivision. The portion from Highland Avenue to Sparrowhawk Road was constructed utilizing a 10’ wide

TABLE 1-1
TIER 1 MULTI-USE PATHWAY PROJECTS

Project No.	Project and Description	Approx. Length (ft)	Approx. Cost (2007 \$)
P1-1	5th Street Crossing by Lower Goose Creek Multi-Use Pathway	900' (Includes underpass and at grade pathways)	\$994,980
P1-2	Little Goose Multi-Use Pathway - Washington Park to Whitney Ice Arena	2,420' Pathway 1,520' Street-Oriented Route	\$282,621
P1-3	Extension of Kendrick Park Multi-use Pathway - Trail End Museum to Pioneer Avenue	1,900'	\$190,509
P1-4	Extension of Kendrick Park Multi-use Pathway - Kendrick Park to Trail End Museum and Sheridan Junior High School	1,320'	\$1,029,810*
P1-5	Extension of Kendrick Park Multi-use Pathway - Dow to Lower Goose Creek Multi-Use Pathway (Lewis Street Underpass)	1,075'	\$513,666
P1-6	Railroad Multi-use Pathway - Alger Street connection to Whitney Commons and Extension to Dow Street	950' Pathway 1,550' Street-Oriented Route	\$174,223
P1-7	Extension of Hume Draw Multi-use Pathway from its current ending point north and west of Memorial Hospital south to 5th Street	375'	\$48,576
P1-8	Little Goose Multi-Use Pathway - Sheltered Acres Park to Brundage Lane	3,900'	\$1,032,378
P1-9	Big Goose Highway Multi-Use Pathway - Southwest Entrance Kendrick Park to Osprey Hill Addition	6,330'	\$754,446
P1-10	Cloud Peak Ranch Pathway - Sheridan High School to Big Goose Highway	8,280'	\$1,365,821
P1-11	Lower Goose Creek Multi-Use Pathway - 8th to 11th	1,170' Pathway, 330' Street-Oriented Route	\$164,093
TOTALS		28,620'	\$6,551,123

* includes cost for additional studies of alternatives or slope stabilization

concrete pathway. The portion from Kendrick Park to Highland Avenue are existing 5' sidewalks.

P1-10. Cloud Peak Ranch Multi-Use Pathway – Sheridan High School to Big Goose Highway

The Cloud Peak Ranch Multi-use pathway currently connects the Sheridan High School to Big Goose Highway. The 2007 Master Plan identified the alignment of this pathway to follow Mydland Road to Dome Drive and from Dome Drive the pathway would connect to 5th Street by traversing between the Scott Addition and Sparrowhawk Subdivision. This open space is owned by the Sparrowhawk Homeowners Association and this organization would not grant an easement to the City of Sheridan for the connection. There are sidewalks from Dome Drive to Big Goose Highway to allow safe access, however it was not the intended connection point.

P1-11. Lower Goose Creek Multi-Use Pathway – 8th to 11th

According to the 2007 Master Plan, the intention of this Multi-use Pathway was to follow the levee behind the homes located on Marion Street for the above-mentioned blocks. Community Meetings were held, and it was determined the best alignment for this pathway was to reconstruct Marion Street, fix existing drainage problems and connect the pathway on 8th and 11th street by sidewalk. This project was completed and has provided a safe connection for pedestrians between 8th and 11th Street.

Tier 2 Pathways

Eight pathways were identified in the 2007 Master Plan as a Tier 2 priority.

Tier 2 Completed Pathways

P2-1. Airport Route – Multi-use Pathway and priority sidewalk development along Brundage Lane from Big Horn Avenue, north through Sheridan County Airport to Airport Road

This pathway has been constructed as well as sidewalk being added to Papago Street as part of a Safe Routes to School Grant. This grant also allowed for the final connection of Airport Road to DeSmet Avenue.

Tier 2 Non-Completed Pathways

The following pathway connections have not been completed. These pathways will move to the Updated Tier 2 priority list and can be found in Table 2-2.

P2-2. Little Goose Multi-Use Pathway Extension – Brundage Lane south along Little Goose Multi-Use Pathway to WYSTAR

P2-3. Sheridan College Multi-use Pathway – WYSTAR east to Sheridan College

P2-4. Brundage Addition East Corridor Multi-Use Pathway – east side of Brundage Addition from Sheridan College to Brundage Lane

P2-5. East Ridge Road Multi-Use Pathway – 5th Street to KROE Lane

P2-6. Airport Business Park Multi-Use Pathway

P2-7. Lower Goose Creek Frackleton Loop

P2-8. Sheltered Acres/Colony South Connection

Tier 3 Pathways

A list of Tier 3 Multi-use pathways (outside of City Limits) can be found in Table 1-3. The Tier 3 Pathways are not being updated in this report.

TABLE 1-2
TIER 2 MULTI-USE PATHWAY PROJECTS

Project No.	Project and Description	Approx. Length (ft)	Approx. Cost (2007 \$)
P2-1	Airport Route - Multi-use Pathway and priority sidewalk development along Brundage Lane from Big Horn Avenue, north through Sheridan County Airport to Airport Road	5,170'	\$589,010
P2-2	Little Goose Multi-Use Pathway Extension - Brundage Lane south along Little Goose Multi-Use Pathway to WYSTAR	5,080'	\$1,270,065
P2-3	Sheridan College Multi-use Pathway - WYSTAR east to Sheridan College	4,810'	\$486,288
P2-4	Brundage Addition East Corridor Multi-Use Pathway - east side of Brundage Addition from Sheridan College to Brundage Lane	4,570'	\$458,568
P2-5	East Ridge Road Multi-Use Pathway - 5th Street to KROE Lane	4,020'	\$407,880
P2-6	Airport Business Park Multi-Use Pathway	9,475'	\$939,312
P2-7	Lower Goose Creek Frackleton Loop	900'	\$108,537
P2-8	Sheltered Acres/Colony South Connection	1,400'	\$941,371
TOTALS		35,425'	\$5,201,031

TABLE 1-3
TIER 3 MULTI-USE PATHWAY PROJECTS

Project No.	Project and Description	Approx. Length (ft)	Approx. Cost (2007 \$)
P3-1	VAMC Multi-use Pathway - VAMC to County Road 80 (Downer Addition Road)	3,290'	\$961,488
P3-2	Little Goose Creek Multi-Use Pathway - south of WYSTAR to County Road 66	5,400'	\$712,080
P3-3	County Road 66 Multi-use Pathway - Little Goose Creek Pathway to new Woodland Park School	3,190'	\$400,752
P3-4	Burn-Cleuch Ditch Multi-use Pathway - New Woodland Park School to Sheridan College	6,700'	\$740,520
P3-5	Westview - Leopard Street Multi-Use Pathway and Creek Crossing	8,325'	\$1,123,056
P3-6	NB Avenue Multi-use Pathway - Leopard Street to Kendrick Park	2,900'	\$311,256
P3-7	Cemetery Draw Multi-Use Pathway - Linden to Huntington	3,120'	\$548,520
P3-8	West Loop Corridor Multi-Use Pathway	34,200'	\$3,310,560
P3-9	Big Goose Highway Multi-Use Pathway - Osprey Hill Addition west to West Loop Corridor	1,500'	\$236,016
P3-10	Lower Goose Creek Multi-Use Pathway Extension - Fort Road north to Decker Highway	5,160'	\$848,496
P3-11	Extension of Airport Route Multi-Use Pathway - Airport Business Park to Little Goose Creek Pathway	6,980'	\$1,038,096
P3-12	Hume Draw Multi-use Pathway Extension - Sagebrush School north to VAMC Connection	3,400' Pathway, 300' Street-Oriented Route	\$354,816
P3-13	Sheridan County Fairgrounds Multi-Use Pathway	1,070'	\$115,632
P3-14	Soldier Creek Multi-Use Pathway - Mydland Road to West Loop Corridor	2,700'	\$285,120
P3-15	Hume Draw Multi-use Pathway Extension - Mydland Road to West Loop Corridor	2,300'	\$252,272
P3-16	Dow Street to Lower Goose Creek Multi-Use Pathway (in conjunction with proposed Riverwalk project)	1,200'	\$217,088
TOTALS		91,435'	\$11,455,768

2019 Master Plan Update

UP1-1. North Interchange Multi-Use pathway – Combination of Crushed Base and Concrete Pathways at North Interchange

The North Interchange pathway is a component of the reconstruction of the North Main Interchange. As part of the design for the new interchange, a pathway system was incorporated into the project. This pathway is a combination of crushed base and concrete surfacing and will help to add beautification to the North Main area.

UP1-2. Adams Ranch Multi-Use pathway – Sheridan College to Woodland Park School

This connection is a very high priority for the City of Sheridan. This pathway would connect the Sheridan College Campus to Woodland Park Elementary School and would also complete all schools being connected to the Sheridan Pathway System. There is very little shoulder width along this highway and the speed limit is 45 mph, creating dangerous conditions for pedestrians. A safe crossing across Coffeen Avenue has been constructed at the Sheridan College entrance, connecting it to the Brundage Lane pathway through the Teal Ponds property. By connecting the Woodland Park Subdivision to the College, it would provide the residents of that neighborhood access to the pathway system.

UP1-3. Loucks Street Multi-Use pathway - Sparrowhawk to Osprey Hill pathway

This connection was a portion of a Tier 1 project identified in the 2007 Master Plan. A pathway has been added on Loucks Street from Highland Avenue to Sparrowhawk Hill. After Sparrowhawk Hill there is no safe pedestrian access to Osprey Subdivision. This highway has a 55-mph speed limit, and several pedestrians and cyclists use this connection along Big Goose Road.

UP1-4. Blacktooth Pathway

Blacktooth Park is the newest park to come online for the City of Sheridan. As part of Phase I of the park, a parking lot and soccer fields were constructed with a pathway traversing the north and west edges of the park boundary. As part of Phase II construction, this pathway will be extended across the southern boundary and connect to the existing Cloud Peak pathway system.

UP1-5. Cemetery Connection Multi-Use Pathway – Kendrick Park to Cemetery

This pathway was identified as a Tier 2 Priority in the 2007 study. There are street routes that would require sidewalks to connect Kendrick Park to the bottom of Cemetery Hill at Leopard Street and Schiller Street. Once at Leopard Street, there is a portion of land owned by Sheridan County. Navigating across this land would allow for the connection to the Cemetery property. This hill is steep and would require a switchback design to meet ADA requirements.

UP1-6. Osprey Connection Multi-Use Pathway – Osprey Subdivision to Hidden Bridge Pathway

As part of the Cloud Peak Ranch system, pathways were constructed connecting Cloud Peak Ranch to Blacktooth Park by traversing the Hidden Bridge Golf Course. A small segment would be required to connect the Osprey Subdivision sidewalks to the crushed base pathway located in Hidden Bridge Golf Course. This connection would provide needed access from Osprey Subdivision to Blacktooth Park and Cloud Peak Ranch.

UP1-7. South Park to Colony South Multi-Use Pathway

This project was listed as a Tier 2 priority in the 2007 Master Plan update and has been upgraded to a Tier 1 project. Since the 2007

report was published the pathway through what is now known as South Park has been completed and this connection would provide access for those living in Colony South and along Big Horn Avenue.

UP1-8. Mydland Road Multi-use Pathway – Holly Ponds Drive to West Park entrance

This section has been identified as a safe route to school for residents living in West Park Trailer Park. Currently there is no sidewalk and

little shoulder width along Mydland Road from the entrance of West Park to the intersection of Holly Ponds Drive and Mydland. Once a pedestrian reaches Holly Ponds Drive, a sidewalk lines both sides of the street providing safe access to Sagebrush Elementary School and Sheridan High School.

TABLE 2-1
TIER 1 MULTI-USE PATHWAY PROJECTS PRIORITY LIST 2019

Project No.	Project and Description	Approx. Length (ft)	Approx. Cost (2019 \$)
UP1-1	North Interchange Multi-Use Pathway - Combination of Crushed Base and Concrete Pathways at North Interchange	10,653'	\$650,000
UP1-2	Adams Ranch Multi-use Pathway - Sheridan College to Woodland Park School	5,595'	\$621,202
UP1-3	Loucks Street Multi-use Pathway - Sparrowhawk to Osprey to Golf Course Road pathway	7,800'	\$720,952
UP1-4	Blacktooth Pathway	934'	\$4,203
UP1-5	Cemetery Connection Multi-Use Pathway - Leopard St. to Cemetery	1,900'	\$274,651
UP1-6	Osprey Connection Multi-Use Pathway - Osprey Subdivision to Hidden Bridge pathway	1,150'	\$147,178
UP1-7	South Park to Colony South Multi-Use Pathway	675'	\$124,230
UP1-8	Mydland Road Multi-use Pathway - Holly Ponds Drive to West Park entrance	550'	\$49,398
TOTALS		29,257	\$2,591,814

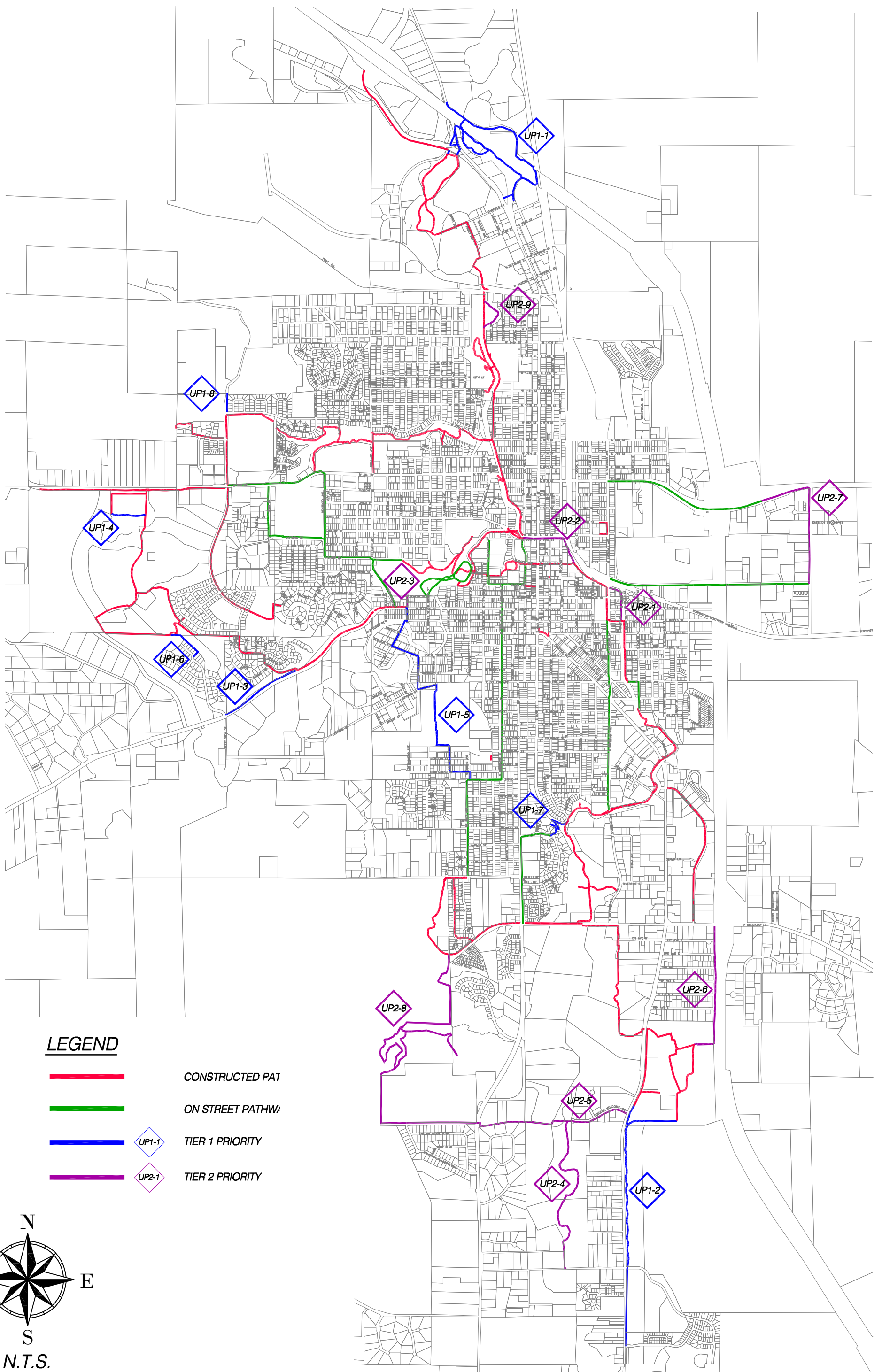
TABLE 2-2
TIER 2 MULTI-USE PATHWAY PROJECTS PRIORITY LIST 2019

Project No.	Project and Description	Approx. Length (ft)	Approx. Cost (2007 \$)
UP2-1	Little Goose Multi-Use Pathway - Washington Park to Whitney Ice Arena	2,420' Pathway 1,520' Street-Oriented Route	\$282,621
UP2-2	Railroad Multi-use Pathway - Alger Street connection to Whitney Commons and Extension to Dow Street	950' Pathway 1,550' Street-Oriented Route	\$174,223
UP2-3	Big Goose Highway Multi-Use Pathway - Southwest Entrance Kendrick Park to Osprey Hill Addition	6,330'	\$754,446
UP2-4	Little Goose Multi-Use Pathway Extension - Brundage Lane south along Little Goose Multi-Use Pathway to WYSTAR	5,080'	\$1,270,065
UP2-5	Sheridan College Multi-use Pathway - WYSTAR east to Sheridan College	4,810'	\$486,288
UP2-6	Brundage Addition East Corridor Multi-Use Pathway - east side of Brundage Addition from Sheridan College to Brundage Lane	4,570'	\$458,568
UP2-7	East Ridge Road Multi-Use Pathway - 5th Street to KROE Lane	4,020'	\$407,880
UP2-8	Airport Business Park Multi-Use Pathway	9,475'	\$939,312
UP2-9	Lower Goose Creek Frackleton Loop	900'	\$108,537
UP2-10	Sheltered Acres/Colony South Connection	1,400'	\$941,371
TOTALS		48,235	\$7,189,132

The total estimated construction for the Tier 1 Pathways equates to approximately \$2,591,814 and will add almost 30,000 linear feet of pathway to the City's Pathway System. These projects will complete such needs as linking all schools to the pathway network, provide safe pedestrian access along the State Highways, and connecting already constructed pathways together.

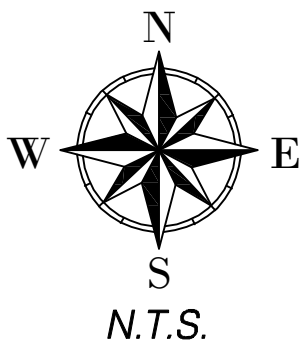
The Tier 2 projects would complete some of the larger pathway connections, with a total approximate cost of \$7,189,132 and 48,235 linear feet.

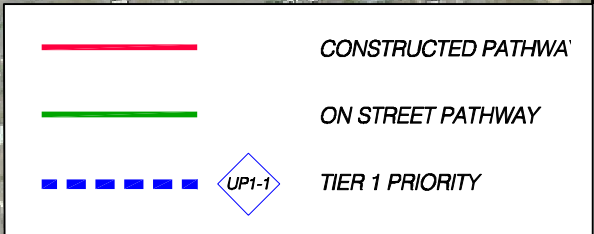
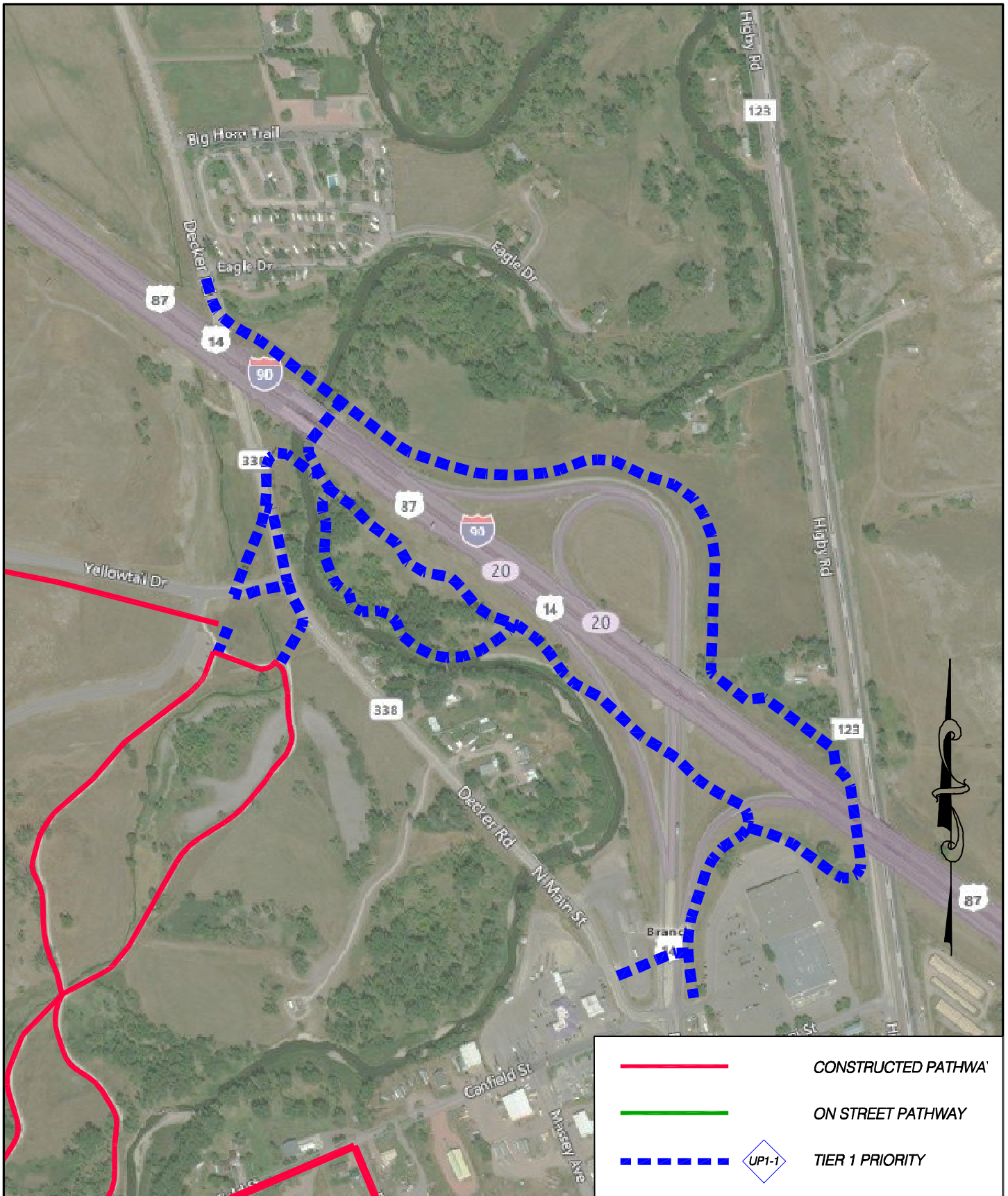
This Master Plan update should provide guidance to the City of Sheridan as they budget for Pathway construction over the next few years.



LEGEND

- CONSTRUCTED PATH
- ON STREET PATHWAY
- UP1-1 TIER 1 PRIORITY
- UP2-1 TIER 2 PRIORITY



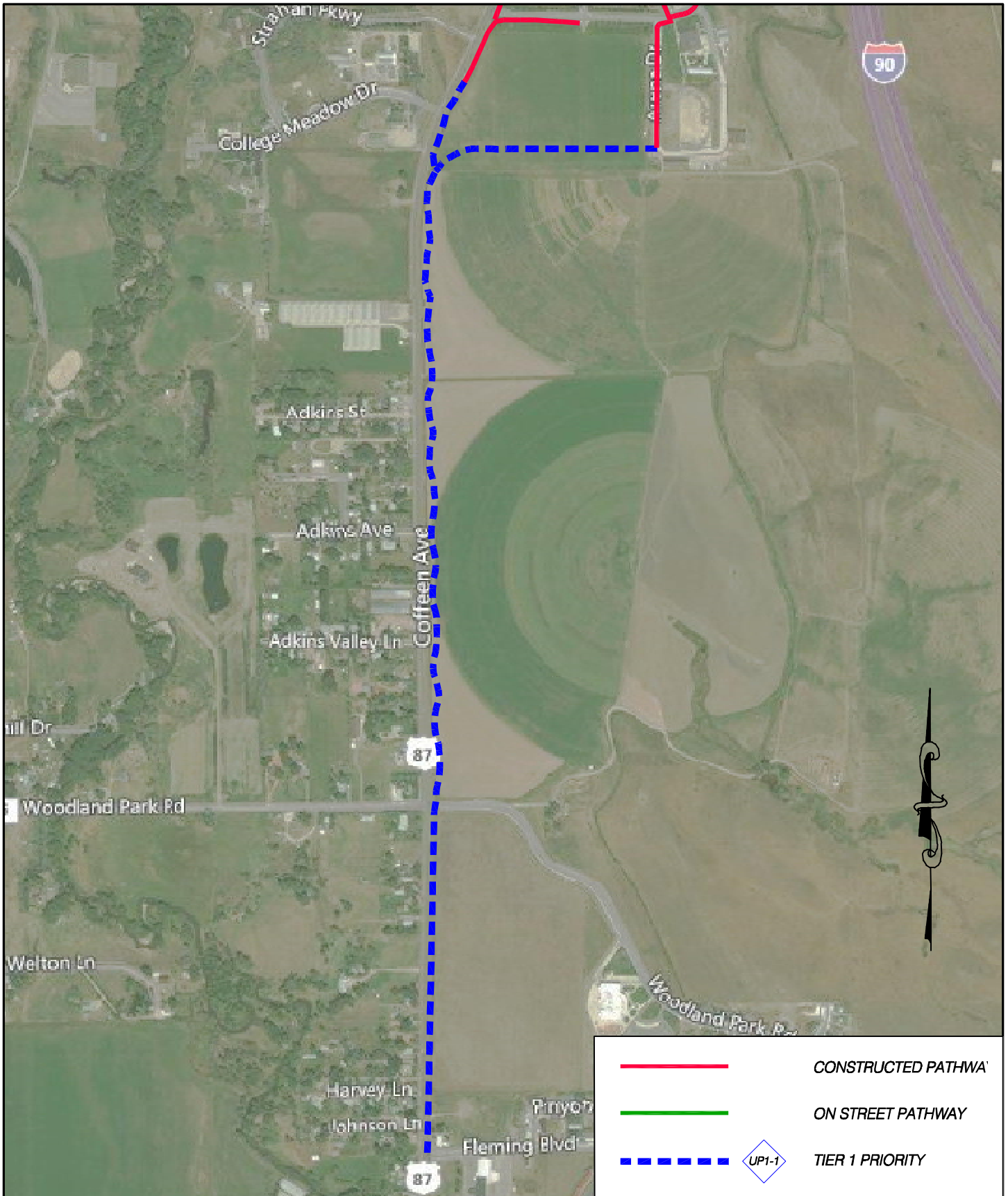



 902 N MAIN STREET
 SHERIDAN, WY 82801
 OFFICE: 307.673.7350
 MC2ENGINEERING.COM

**SHERIDAN
 PATHWAYS
 MASTER PLAN**

**GATEWAY PARK/
 NORTH INTERCHANGE
 MULTI-USE PATHWAY**

FIG. UP1-1

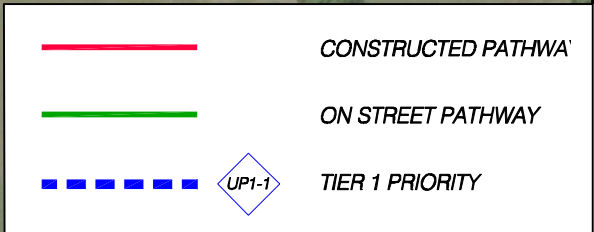
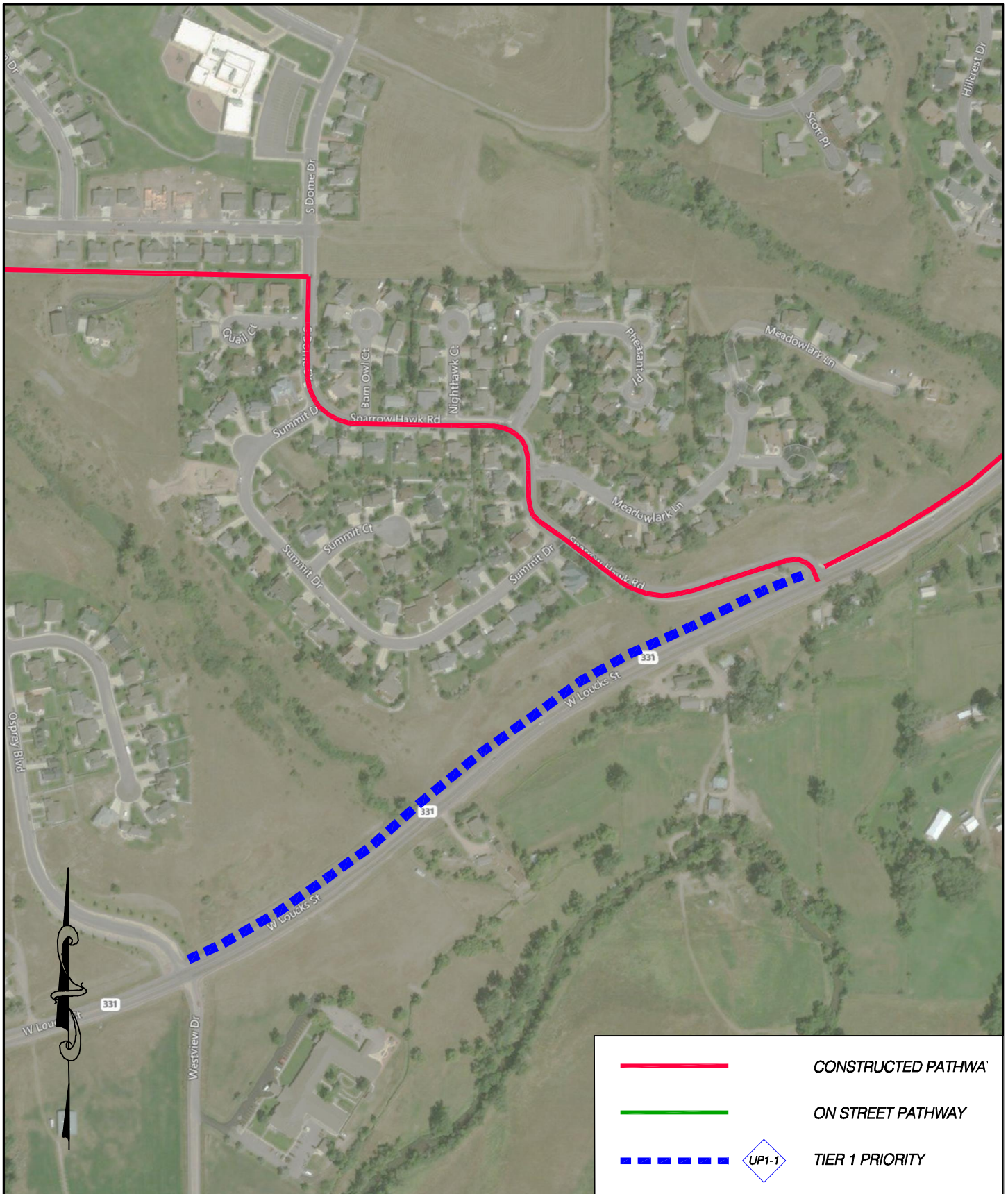



902 N MAIN STREET
SHERIDAN, WY 82801
OFFICE: 307.673.7350
MC2ENGINEERING.COM

**SHERIDAN
PATHWAYS
MASTER PLAN**

**ADAMS RANCH MULTI-USE
PATHWAY**

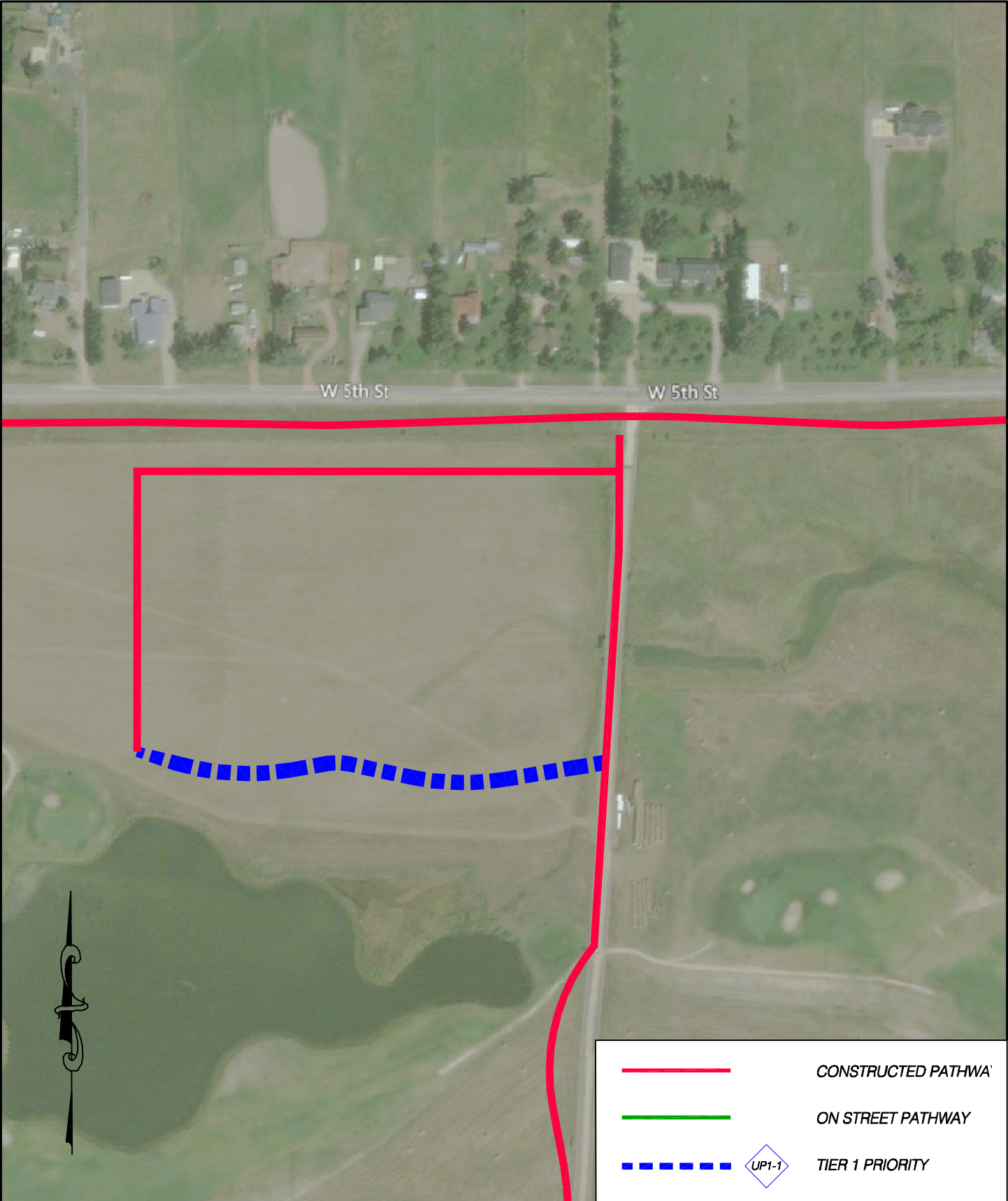
FIG. UP1-2







	902 N MAIN STREET SHERIDAN, WY 82801 OFFICE: 307.673.7350 MC2ENGINEERING.COM
	<p style="text-align: center;">SHERIDAN PATHWAYS MASTER PLAN</p>

**LOUCKS STREET MULTI-USE
PATHWAY**

FIG. UP1-3



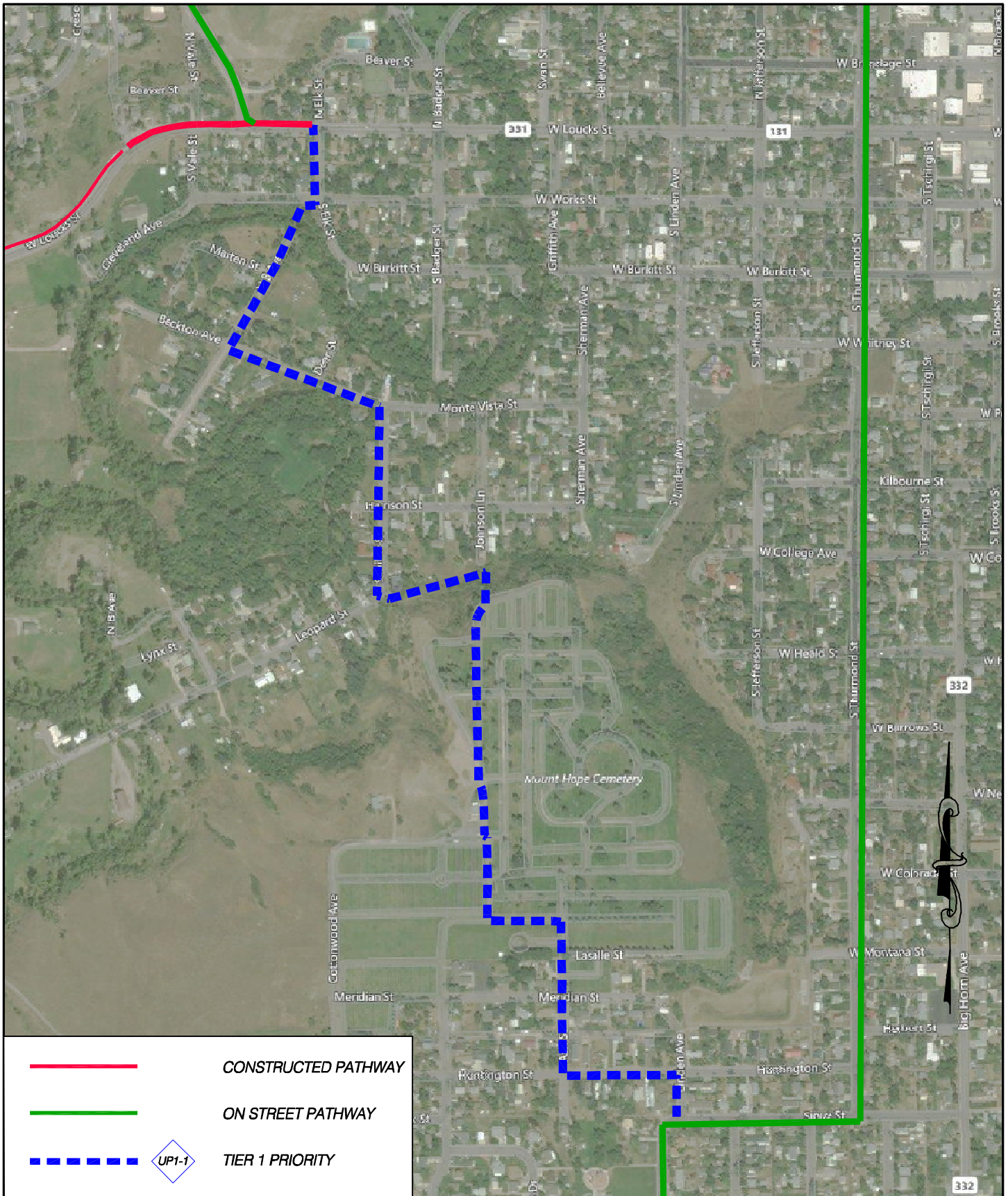
	CONSTRUCTED PATHWAY
	ON STREET PATHWAY
 	TIER 1 PRIORITY

	902 N MAIN STREET SHERIDAN, WY 82801 OFFICE: 307.673.7350 MC2ENGINEERING.COM
	SHERIDAN PATHWAYS MASTER PLAN

SHERIDAN
PATHWAYS
MASTER PLAN

BLACKTOOTH PATHWAY

FIG. UP1-4



	CONSTRUCTED PATHWAY
	ON STREET PATHWAY
	TIER 1 PRIORITY

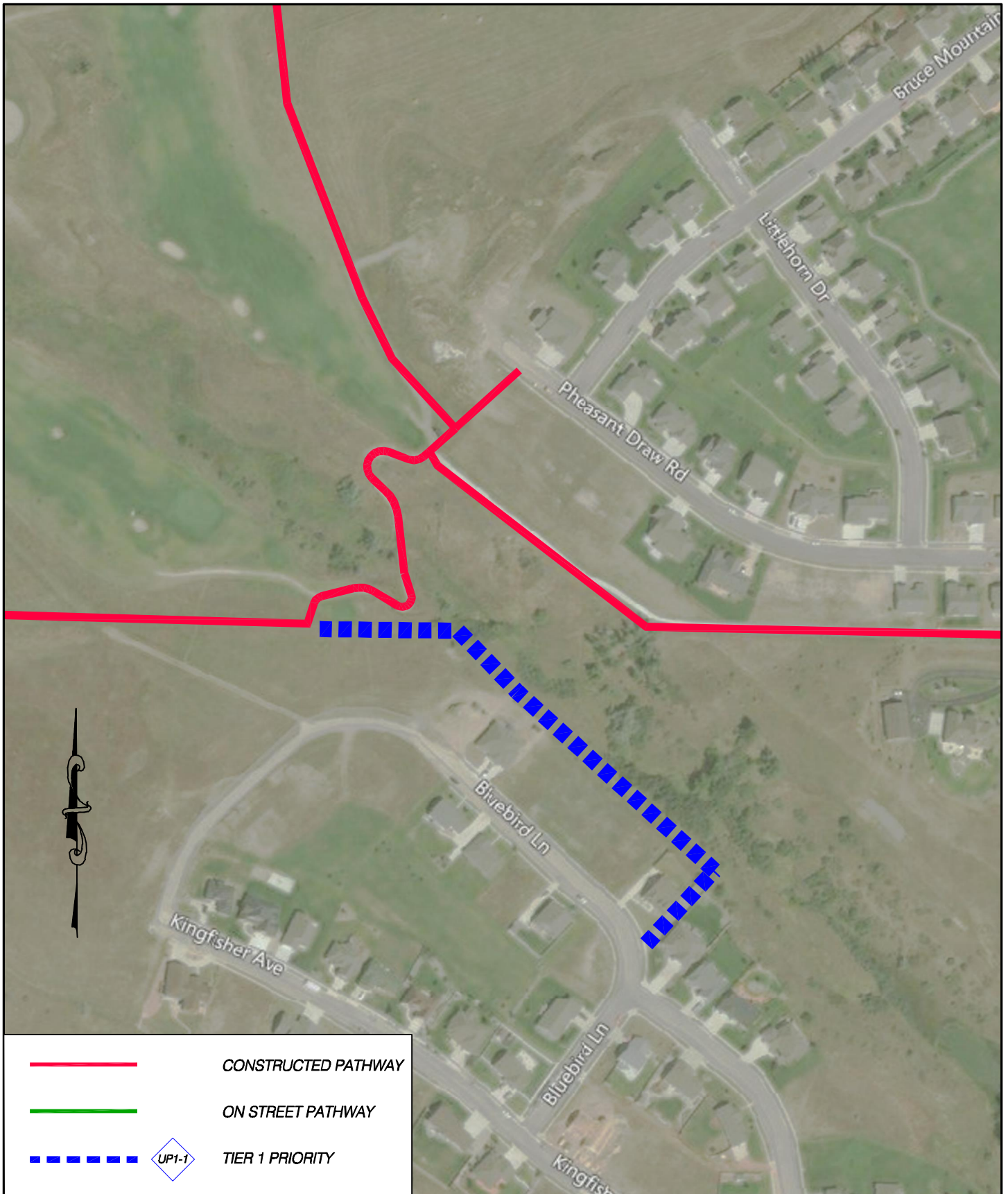






902 N MAIN STREET
 SHERIDAN, WY 82801
 OFFICE: 307.673.7350
 MC2ENGINEERING.COM

**SHERIDAN
 PATHWAYS
 MASTER PLAN**

**CEMETERY CONNECTION
 MULTI-USE PATHWAY**

FIG. UP1-5



	<i>CONSTRUCTED PATHWAY</i>
	<i>ON STREET PATHWAY</i>
 	<i>TIER 1 PRIORITY</i>

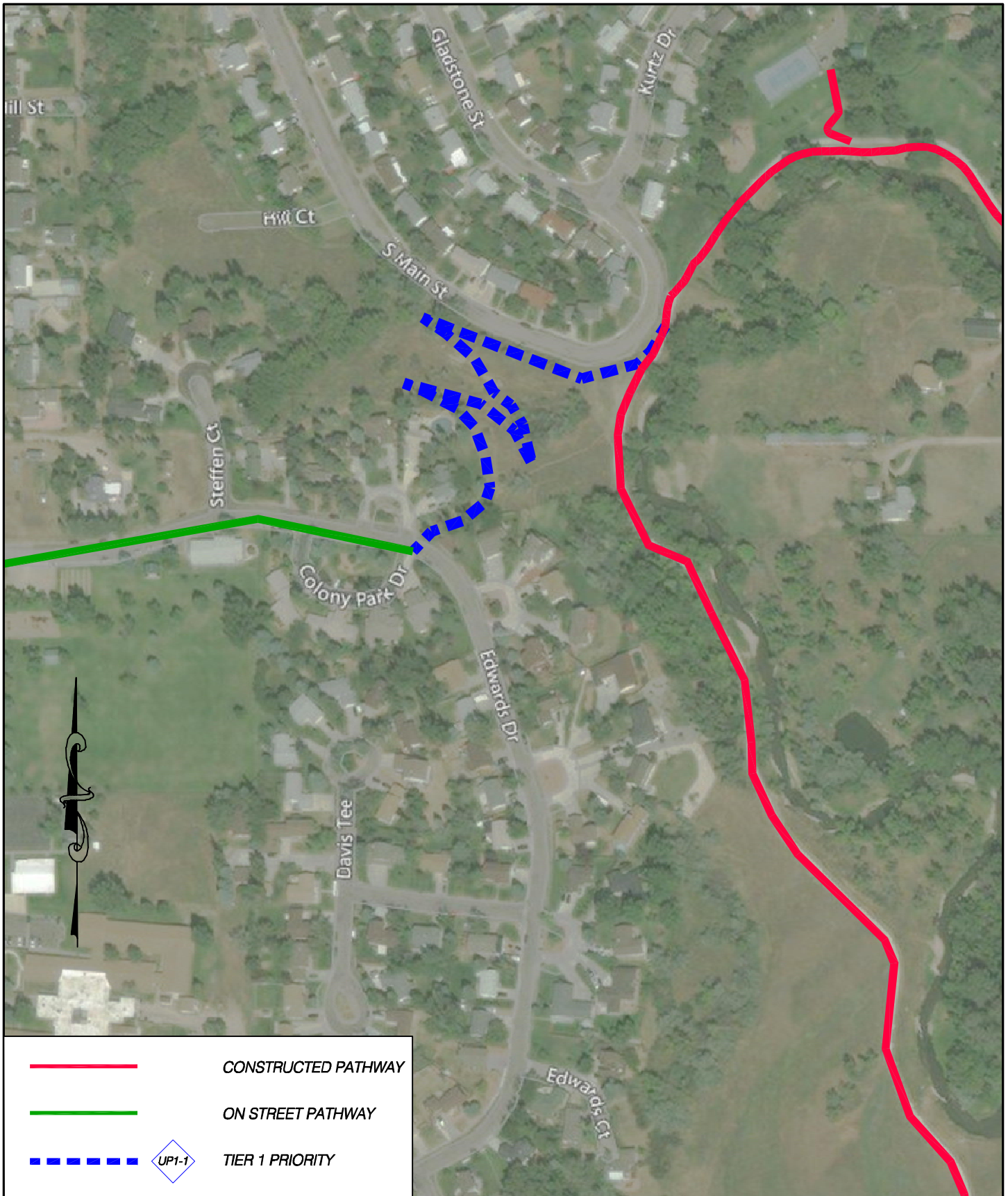


902 N MAIN STREET
 SHERIDAN, WY 82801
 OFFICE: 307.673.7350
 MC2ENGINEERING.COM

**SHERIDAN
 PATHWAYS
 MASTER PLAN**

**OSPREY CONNECTION
 MULTI-USE PATHWAY**

FIG. UP1-6



	<i>CONSTRUCTED PATHWAY</i>
	<i>ON STREET PATHWAY</i>
	<i>TIER 1 PRIORITY</i>

	902 N MAIN STREET SHERIDAN, WY 82801 OFFICE: 307.673.7350 MC2ENGINEERING.COM
	<p>SHERIDAN PATHWAYS MASTER PLAN</p>

**COLONY SOUTH
MULTI-USE PATHWAY**

FIG. UP1-7



902 N MAIN STREET
 SHERIDAN, WY 82801
 OFFICE: 307.673.7350
 MC2ENGINEERING.COM

**SHERIDAN
 PATHWAYS
 MASTER PLAN**

**MYDLAND ROAD
 MULTI-USE PATHWAY**

FIG. UP1-ε